

**M**en

**A**t

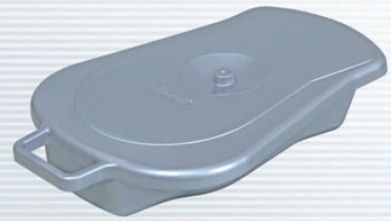
**R**are &

**U**nique

**T**rack of

**I**nnovation

**Maruti**®



**MARUTI**  
**ENTERPRISES**  
Dedicated to our duty towards the world



## Bed Pan - Plastic - Male/Female (Standard)

- Useful for both male and female.
- Specially designed for proper excreta drainage.
- Light weight & strong handle for easy carriage & cleaning.
- Smooth finishing with curvy edges for comfortable use.
- Best fit cap to avoid odor & maintain hygiene.
- Can be washed with warm or boiling water.



## Bed Pan - Plastic - Male/Female (Classic)

- Useful for both male and female.
- Strong, durable & light weight.
- Special design to cover less space (One piece can be fixed inside other which makes shipment and storage easier).
- Best fit cap to avoid odor & maintain hygiene.
- Uniquely designed rear portion to prevent splash back & comfortable sitting.
- Can be washed with warm or boiling water.

## Urine Pot - Plastic - Male/Female

(1000ml)

- Useful for both male and female.
- Strong and well shaped handle for easy carriage.
- Slim shape for more comfort.
- Best fit cap to avoid odor & maintain hygiene.
- Graduated up to 1000 ml.
- Can be washed with warm or boiling water.
- Light weight, easy to carry, ideal for domestic use.



## Enema/Douche Can Set-Plastic

(1500 MI)

- Enema can / Douche can / Baste giving can set - Square 1500 ml
- 1<sup>st</sup> time in INDIA : Square shaped transparent can as a complete set of 3 pcs.
- Superior quality material for durability & comfortable use.
- Extra soft tube of 150 cm length.
- Special material with perfect design of nozzle for painless and harmless use.
- Leak-proof fitting of nozzle, Tube and Tap.





## e Steam Inhaler - Plastic (Non Electric)

- Best choice for asthmatic patients.
- Perfectly designed cap for better inhaling and fit-grip handle.
- Transparent and high temperature withstanding cup.
- Light weight, durable and user friendly.
- Bigger space to pour more water.
- Quick & easy steam inhalation.
- For quick relief from cough & cold.



## e Vaporiser - Plastic (Electric)

- Plug and play device.
- Useful for cold, cough treatment and other uses.
- Made from superior quality plastic material.
- Used with domestic power supply.
- Specially designed top for easy inhaling.

## Facial Steam - Plastic

### All in One (Electric)

- Plug and play device.
- Used with domestic power supply.
- Made from superior quality plastic material.
- Attachments which best fits to face curves.
- Useful for cold, cough, skin treatment and other uses.
- 3 attachments easy and for different uses.



## Orthopedic Heat Belt - Regular

### (Size : 295 x 215 mm)

- 3 Step switch with single thermostat & safe to use.
- Automatic heat regulation.
- Used with domestic power supply. (220 Voltage AC)
- Less power consumption.
- Fireproof and shockproof coated, imported heat coil and cover.
- Washable butter cloth covering.







## Instant Syringe Needle Destroyer

**50 W (Electric)**

**Specification :**

- Compact, easy portable and safe to use.
- Useful for Hospitals / Personal clinics / Medical colleges / Labs.
- User friendly & environment friendly.
- Effective for needle burning.
- Used with domestic power supply directly (220 Voltage AC, 50 Watt consumption)
- Sturdy powder coated housing making it Rust-proof.



## Urine Culture Bottle-Plastic

**(60ml, 45ml, 30ml)**

- Used for filling urine for pathology laboratory testing.
- Transparent round bottles for clear visibility with graduations for easy measurement.
- Used superior quality plastic material to provide noble quality products.
- Threaded neck with easy fitting cap to overcome leakage problem during short-storage.
- Stickers - For easy identification of sample donor
- Available in 3 sizes: 30 ml, 45 ml, 60 ml.

## Veterinary Syringe-Plastic

**(5ml)**

- Unique design with unbreakable quality.
- High quality barrel which is resistant to puncture and tearing.
- Prominent graduations (5 ml).
- Used superior plastic material to provide noble quality products.
- Available in temper-proof ribbon packing.
- Reusable after autoclaving.



## Quality Policy :

At **Maruti Enterprises**, we are committed to maintain the highest quality standards for our products. We consistently put best of our efforts to improve the quality of our products by adopting the latest technology and use the best material to establish a long term relationship and make a mark of assurance. All our products should be an unmatched creation of art & technology's combination. Customer's satisfaction and trust is the greatest reward of our efforts.

MFG. BY :



56-57, Ram Rath Industrial Estate, Nr. Rashtra Bharti School,  
CTM-Hatkeshwar Road, Ahmedabad-380 026. Gujarat (INDIA) Tel. No. : 079-25855657  
Website : [www.marutienterprises.com](http://www.marutienterprises.com) • Email : [marutienterprises05@gmail.com](mailto:marutienterprises05@gmail.com)